

RANGE H**CE**

RECIRCULATING AIR BOX Labopur®

Take advantage of Labopur®'s technology with any safety cabinet



▲ H50C + CORG51



▲ H50C + CORG51 (for changing the filter)

OPERATING PROCESS

The fan extracts harmful and toxic vapors from the cabinet. The charcoal filter purifies the fumes before safely rejecting them in the environment.

CONFORMITY

- Active charcoal filters adsorption capacity and filtration system are tested and certified NF X 15-211.
- Electric fans are in conformity with European specification CE.

ADVANTAGES

- Labopure's technology.
- Adaptability to all types of cabinets, with 3 inlets for connection.
- Easy installation and connection.
- Warning light insures good functioning of the ventilation system.
- Front control window immediately indicates if the filter is inside and well adapted to your needs.
- High efficiency active charcoal filter specialised and treated following products stored in compliance with NF X 15-211.
- Dust-protecting pre-filter, efficiency 92% for particles over 3 µm.
- Easy replacement of the active charcoal filter.
- The standard timer supplied with your recirculating air box indicates the total use of your box. After programming, every 60 hours, a sound alarm invites you to check the saturation of the active charcoal filter.

TECHNICAL SPECIFICATIONS

- Steel frame 12/10th.
- Epoxy painting : white RAL 9010, blue RAL 5015.
- Soft and silent electrical fan : 220-240 volts - 20 watts - 0,1 A - 43 db (A) (excluding air flow) - Airflow 86 m³/hour - Protection : IP54.
- Inlet airflow diameter : 100 mm.

OPTIONS

- Active charcoal filter : boxes are provided without active charcoal filter. You have to select the type of filter in the boarding bellow, as per the stored products.
- Connecting kit.
- Control of filter saturation level by REACTIVE TUBES: Control port on the front of the box. Easy using of specialized reactive tubes. Using of manual pump for testing. Control of the filter efficiency by reading the reactive tubes color codes.

We remind you that you can use filter for specific applications.

CONNECTING KIT OPTION (KRC)

The kit allows to connect easily your ventilation or filtration box with any cabinet.
It includes :



- 1 sleeve diameter 100mm, ref CHJ, to fix on the exhaust of the cabinet.
- 1 meter of flexible tube diameter 100mm ref KL 100.
- 2 clamp diameter 100 mm, ref. CDS100.

Ref.	Description	Dimensions H x W x D (mm)	Weight (kg)
H50C	Recirculating air box (delivered without filter)	310 x 505 x 485	15
ORG50	Active charcoal filter for organic vapors	70 x 390 x 390	8
CORG51	Polyvalent active charcoal filter for corrosive and organic vapors	70 x 390 x 390	9
FOR50	Active charcoal filter for formaldehyde vapors	70 x 390 x 390	9
CAR50	Kit to use recirculating air box without filter	70 x 390 x 390	2
PMAF	Manual pump	-	0,4
TROR	Pack of 10 reactive tubes for organic tests	-	0,1
TRAC	Pack of 10 reactive tubes for corrosives tests	-	0,1
TROA	Pack of 5 reactive tubes for organic test and 5 reactive tubes for corrosive tests	-	0,1

⁽¹⁾ The latest generation «CORG» filter adsorbs a large majority of chemicals commonly used in laboratories : organic and inorganic acids, solvents and organics.

RANGE H**CE**

VERTICAL RECIRCULATING AIR BOX Labopur®

Take advantage of Labopur®'s technology with under bench cabinets



*H40+ + CORGFC
(Bench and cabinet not included)



Castors



*H40+ + CORGFC
(Easy replacement of the active charcoal filter)

OPERATING PROCESS

The fan extracts harmful and toxic vapors from the cabinet. The charcoal filter purifies the fumes before safely rejecting them in the environment.

CONFORMITY

- Active charcoal filters adsorption capacity and filtration system are tested and certified NF X 15-211.
- Electric fans are in conformity with European specification CE.

ADVANTAGES

- Labopure's technology.
- Adaptability to all types of cabinets, and especially for under bench cabinets
- Easy installation and connection.
- Warning light insures of good functioning of the ventilation system.
- Front control window immediately indicates if the filter is inside and well adapted to your needs.
- High efficiency active charcoal filter specialised and treated following products stored in compliance with NF X 15-211.
- Dust-protecting pre-filter, efficiency 92% for particles over 3 µm.
- Easy replacement of the active charcoal filter.
- Castors at the back for easy movement

TECHNICAL SPECIFICATIONS

- Steel frame 12/10th.
- Epoxy painting : white RAL 9010, blue RAL 5015.
- Soft and silent electrical fan : 220-240 volts - 20 watts - 0,1 A - 43 db (A) (excluding air flow) - Airflow 86 m³/hour - Protection : IP54.
- Inlet airflow diameter : 100 mm.

OPTIONS

- Active charcoal filter : boxes are provided without active charcoal filter. You have to select the type of filter in the boarding below, as per the stored products.
- Connecting kit.
- Control of filter saturation level by REACTIVE TUBES:
- Control port on the front of the box.
- Easy using of specialized reactive tubes.
- Using of manual pump for testing.
- Control of the filter efficiency by reading the reactive tubes color codes.

We remind you that you can use filter for specific applications.

CONNECTING KIT OPTION (KRC)

The kit allows to connect easily your ventilation or filtration box with any cabinet.
It includes :



- 1 sleeve diameter 100mm, ref CHJ, to fix on the exhaust of the cabinet.
- 1 meter of flexible tube diameter 100mm ref KL 100.
- 2 clamp diameter 100 mm ; ref. CDS100.

Ref	Description	Dimensions H x W x D (mm)	Weight (kg)
H40+	Recirculating air box (delivered without filter)	630 x 270 x 460	18
ORGFC	Active charcoal filter for organic vapors	100 x 200 x 400	8
CORGFC	Polyvalent active charcoal filter for corrosive and organic vapors	100 x 200 x 400	9
FORFC	Active charcoal filter for formaldehyde vapors	100 x 200 x 400	9
CARFC	Kit to use recirculating air box without filter	70 x 390 x 390	2
PMAF	Manual pump	-	0,4
TROR	Pack of 10 reactive tubes for organic tests	-	0,1
TRAC	Pack of 10 reactive tubes for corrosives tests	-	0,1
TROA	Pack of 5 reactive tubes for organic test and 5 reactive tubes for corrosive tests	-	0,1

(1) The latest generation « CORG » filter adsorbs a large majority of chemicals commonly used in laboratories : organic and inorganic acids, solvents and organics.

The manufacturer reserves the right to discontinue or change specifications or designs at any time without notice and without incurring obligations. 02/2020

Flammable cabinets

Corrosive cabinets

Toxic cabinets and multirisk

Pesticide range

Fume hoods, filtering cabinets - Ventilation

Containment and Cans

Anti-fire equipments and File cabinets

Showers and first-aid equipments

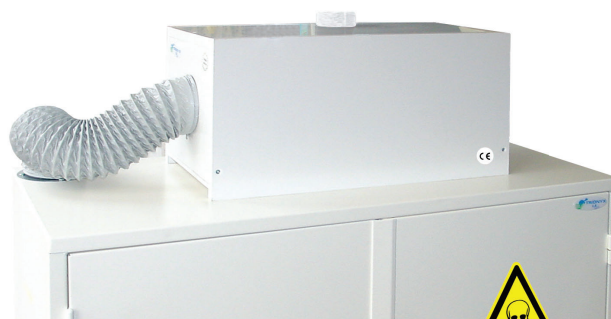
RANGE V**ISO 3744****CE**

VENTILATION AND FILTRATION BOXES

CDV-A
+ option KRC
+ option KL100
+ option CDS100



CDF-P
+ option KRC



VENTILATION BOX (CDV-A)

USE AREA

The electric fan allows the extraction of toxic vapours generated inside your safety cabinet.

CONFORMITY

Electric fan in compliance with ISO 3744; CE marking.

ADVANTAGES

- Adaptable to all of our cabinets.
- Simple and aesthetic fitting.
- Easy connection between the cabinet and the vent box.
- Connection by flexible tube Ø 100 mm (in option).
- Lighting control allowing to survey the proper working of the fan.

TECHNICAL SPECIFICATIONS

- Built in steel 12/10th, white epoxy paint RAL 9010.
- Electric engine with switch ON/OFF with lighting control.
 - 220/240 volts – 50 Hz – 97 W - 0,54 A - 55,5 dB(A) (excluding air flow)
 - Flow : 215 m³/h – Protection : IP44.
 - Exhaust inlet and outlet : Ø 100 mm..

CONNECTING KIT OPTION (KRC)

It allows to connect easily your ventilation or filtration box with any cabinet
It includes :

- 1 sleeve diameter 100mm, ref CHJ, to fix on the exhaust of the cabinet.
- 1 meter of flexible tube diameter 100mm ref KL 100.
- 2 clamp diameter 100 mm, ref. CDS100.



FILTRATION BOXES (CDF-A, CDF-ACORG AND CDF-P)

USE AREA

The electric fan allows the exhaust of toxic vapours generated inside the safety cabinet. The vapours are purified by the active charcoal filter and rejected without danger in the atmosphere.

CONFORMITY

- CE marking

ADVANTAGES

- Adaptable to all of our contacts.
- No modification of building's structure required.
- Simple and aesthetic fitting.
- Easy connection between the cabinet and the vent box.
- Connection by flexible tube Ø 100 mm (in option).

TECHNICAL SPECIFICATIONS

Filtration box CDF-A model (not show on the picture)

- Built in steel 12/10th, White epoxy paint RAL 9010.

Filtration box CDF-P model

- Built in cellular PVC, White colour

Each box contains independent compartments :

Filtration compartment :

- «Candle» type active charcoal filter (H150 x Ø150 mm), ref. CDFORG on CDF-A model CDFCORG on CDF-P model; must be changed at least once a year.
- Filter settled on the box by 3 lugs and airtightness insured thanks to a rubber seal.

Ventilation compartment :

- Electric engine :
 - 220/240 volts – 50 Hz – 20 W - 0,09 A - 43 dB(A) (excluding air flow).
 - Flow : 86 m³/h – Protection : IP54.
 - Exhaust inlet and outlet : Ø 100 mm.

P/N	Description	Overall dimensions H x W x D (mm)	Equiped with active charcoal filter	Weight (kg)
CDV-A	Ventilation box in steel	235 x 260 x 245	no	8
CDF-A	Filtration box in steel with filter	310 x 410 x 282	CDFORG	13
CDF-ACORG	Filtration box in steel with filter	310 x 410 x 282	CDFCORG	13
CDF-P	Filtration box in cellular PVC with filter	330 x 462 x 296	CDFCORG	10
KRC	Connecting kit for box	-	-	1
KL100	1 metre flexible tube Ø 100 mm	-	-	0,2
CHJ	Connection unit Ø 100 mm	-	-	0,1
CDS100	Clamp collar Ø 100 mm	-	-	-
CDFORG	Active charcoal filter for organic vapors	H 150 x Ø 150	Filter must be changed at least once a year	3
CDFCORG	Polyvalent active charcoal filter for corrosive and organic vapors	H 150 x Ø 150		3
CDFFOR	Active charcoal filter for formaldehyde vapors	H 150 x Ø 150		3

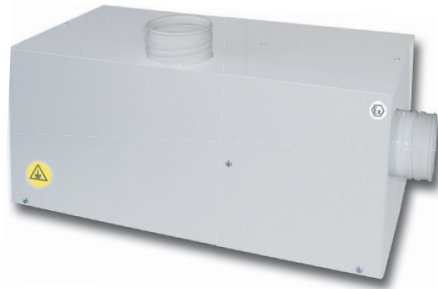
⁽¹⁾ The latest generation «CORG» filter adsorbs a large majority of chemicals commonly used in laboratories : organic and inorganic acids, solvents and organics.

RANGE V

Zone II



VENTILATION ATEX BOXES “ with Filtration Option ”



CERTIFICATION

- **Model with ATEX airflow:** Electric fan with ATEX volute approved ATEX CE II 3/G.
- **Model with ATEX engine:** Electric fan with ATEX engine approved ATEX certified ATEX CE II 2/G EEx e IIB T4.
- **Model with ATEX airflow and engine block:** Electric fan with airflow approved ATEX CE II 3/G and engine block approved ATEX CE II 3/G and certified ATEX engine CE II 3/G EEx c IIB T3.

ADVANTAGES

- Convenient for all safety cabinets.
- Easy and rapid installation, nice looking.
- Easy connection between the cabinet outlet and the box inlet.
- Connection by flexible tube diameter 100mm (in option).

TECHNICAL SPECIFICATIONS

- Built in steel 12/10th.
- White epoxy paint RAL 9010.
- **Electric fan with ATEX airflow:**
 - 220-240 volts – 50 Hz – 12 W – 0,17 A – 47 dB(A) (excluding air flow).
 - Airflow: 80 m3/h – IP55 protection.
 - Inlet diameter: 100 mm / Outlet diameter: 100 mm.
- **Electric fan with ATEX engine:**
 - 220-240 volts – 50 Hz – 120 W – 1,07 A – 65 dB(A) (excluding air flow).
 - Airflow: 190 m3/h – Protection ATEX II 2/G EEx e IIB T4 protection.
 - Inlet diameter: 100 mm / Outlet diameter: 100 mm.
- **Electric fan with ATEX airflow and engine block:**
 - 380 volts phase- 50 Hz -180 W - 0,82/0,47 A 65 db (A) (excluding air flow).
 - Airflow: 200 m3/h - Volute protection: ATEX CE II 3/G, Engine protection : ATEX CE II 3/G EEx c IIBT3.
 - Inlet diameter: 100 mm / Outlet diameter: 100 mm.
 - Three-phase 16 A.

FILTRATION OPTION WITH CHARCOAL FILTER

Our ATEX ventilation boxes may be equipped with an active charcoal filter. You may select it in the bottom of the file depending on the chemicals you will store in your safety cabinet. The adsorption capacity of charcoal filters is tested approved according the new NF X 15-211 may 2009 - Class 2 norm.



3 different charcoal filters are proposed:

- CDFORG Charcoal filter for organic vapors.
- CDFCORG “Universal”⁽¹⁾ charcoal filter for organic and corrosive vapors.
- CDFFOR charcoal filter for formaldehyde vapors

CONNECTING KIT OPTION (KRC)

It allows to connect easily your ventilation or filtration box with any cabinet.

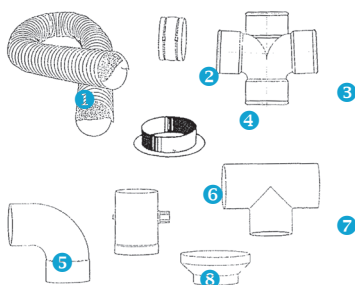
It includes :

- 1 sleeve diameter 100mm, ref CHJ, to fix on the exhaust of the cabinet.
- 1 meter of flexible tube diameter 100mm ref KL 100.
- 2 clamp diameter 100 mm, ref. CDS100.



P/N	Description	ATEX type	Voltage	Dimensions H x W x D (mm)	Weight (kg)
CVAT	Ventilation box with ATEX volute (without filtration option)	Volute	220 v mono	305 x 650 x 285	14
CMAT	Ventilation box with ATEX engine (without filtration option)	Engine	220 v mono		18
CTAT	Ventilation box with ATEX volute and engine (without filtration option)	Volute & Engine	380 v three phase		18
KRC	Connecting kit for box	-	-	-	1
① KL100	Flexible tube diameter 100mm, per meter	-	-	-	0,2
④ CHJ	Connecting sleeve diameter 100mm	-	-	-	0,1
CDS100	Clamp diameter 100mm	-	-	-	0,01
CDFORG	Active charcoal filter for organic vapors	Filter must be changed at least once a year			3
CDFCORG	“Universal” ⁽¹⁾ charcoal filter for organic and corrosive vapors				3
CDFFOR	Active charcoal filter for formaldehyde vapors				3

VENTILATION EQUIPMENTS



P/N	Description	Weight (kg)
② R100	Connecting sleeve diameter 100mm	0,5
③ RT188	PVC cross diam 100 mm	0,5
⑤ CT90	PVC elbow (90°) diam 100 mm	0,5
⑥ V125	Manual regulating PVC valve diam 125 mm	1
⑦ BT188	PVC T diam 100 mm (also available in Y, please contact-us)	0,5
⑧ ELE75	PVC reducer diam 100/75 mm	0,5
⑨ ELE39	PVC reducer diam 125/100 mm	0,5

⁽¹⁾ The latest generation «CORG» filter adsorbs a large majority of chemicals commonly used in laboratories : organic and inorganic acids, solvents and organics.

The manufacturer reserves the right to discontinue or change specifications or designs at any time without notice and without incurring obligations. 03/2017

Flammable cabinets

Corrosive cabinets

Toxic cabinets and multirisk

Pesticide range

Fume hoods, filtering cabinets - Ventilation

Containment and Cans

Anti-fire equipments and File cabinets

Showers and first-aid equipments